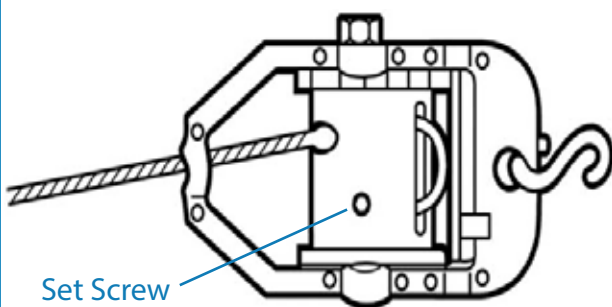


RATCHET INSTALL

Install & Replace Instructions for Competitor[®] Ratchet (Take Up Reel)



Set Screw

STEP 1: Remove Allen wrench from instruction sheet.

STEP 2: Loosen set screw located on ratchet reel.

STEP 3: Remove old cable from ratchet wheel.

STEP 4: Insert cable into hole until flush with the face of the spool on the other side.

STEP 5: Tighten set screw located on ratchet reel.



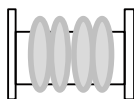
Please Note: When purchasing a new lane line, the ratchet (take up reel) is part of the complete lane line assembly.

TIPS & WARNINGS

Operating Instructions for Competitor[®] Ratchet (Take Up Reel)

TIGHTENING LANES

1. Use only the COMPETITOR wrench to tighten lanes.
2. Wind cable on spool evenly. Do not overlap.



RELEASING LANES

1. Increase lane tension enough to release pressure on locking device.
2. Depress thumb pawl on locking device and allow spool to release tension one notch.
3. Repeat steps 1 & 2 until tension is completely released.

-
- When the reel is under tension, never hit thumb pawl with ratchet wrench to release catch lock. DO NOT allow the spool to run free. This could damage the teeth of the spool, cause a backlash of cable and be dangerous to the operator.
 - The cable of the lane is designed to be used under normal conditions. Improper use, such as hanging on the lane or jumping in and grabbing the lane, may cause the cable to rupture or damage the ratchet (take up reel).
 - The Competitor Ratchet (Take Up Reel) is very durable and built for the rugged conditions of a pool. With proper care, a Competitor reel will last a lifetime. When misused, the reel can be damaged beyond repair in a short time.